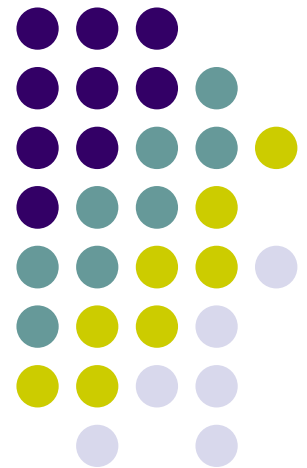


Welcome to ECE!

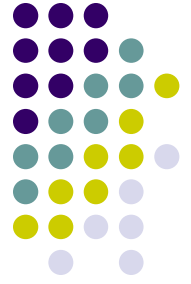
Keith A. Teague, PhD, PE

ECEN 6001

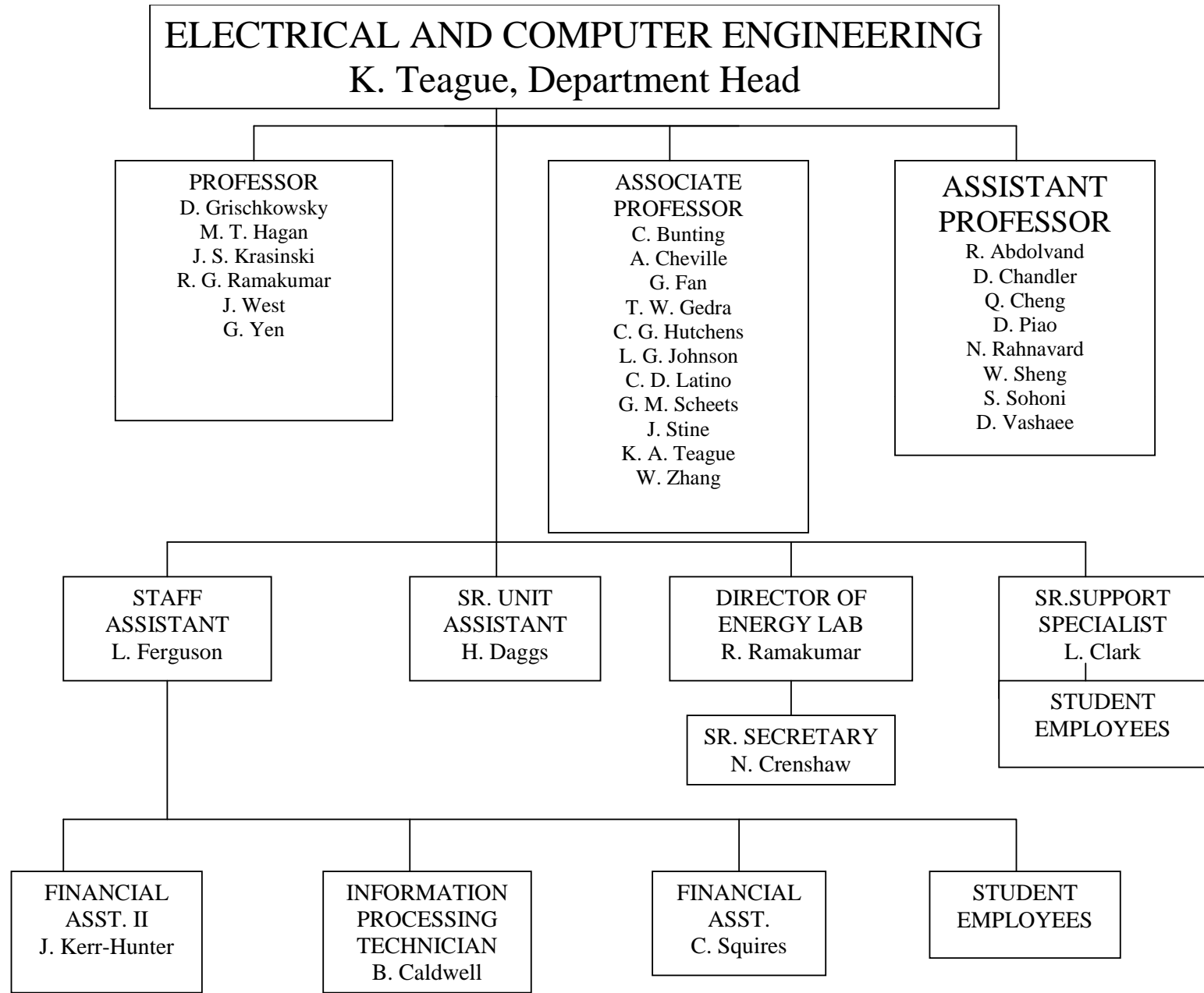
Spring 2009

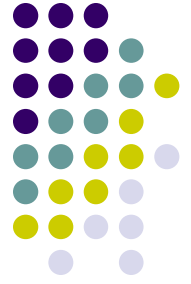


Overview



- Introduction to ECE
- A few requirements to remember
- What we expect of you
- Your future





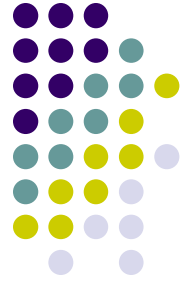
ECE Personnel - Staff

- The Staff
 - Lory Ferguson – employment paperwork and eVerify, direct assistant to the Head
 - Helen Daggs – student records, grad checks, advisement
 - Carol Squires – research accounting, travel
 - Jean Kerr-Hunter – equipment requisitions, purchasing, p/cards, office supplies
 - Barbara Caldwell – receptionist, mail, key checkout, manages appointments for the Head
 - Nancy Crenshaw – assistant to Dr. Ramakumar and the Engineering Energy Laboratory
 - Lee Clark – technical support and laboratory manager



ECE Personnel - Faculty

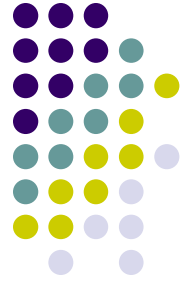
- Research Areas of the Faculty
 - Analog and Digital VLSI – Abdolvand, Hutchens, Johnson, Latino, Stine, Vashae
 - Bio-Sensors, Bio-Signals and Bio-Systems – Fan, Hutchens, Piao
 - Computer Engineering – Acken, Hutchens, Johnson, Latino, Sheng, Sohoni, Stine, Teague
 - Energy and Power – Ramakumar, Gedra
 - Photonics and Electro-Optics – Cheville, Grischkowsky, Krasinski, W. Zhang
 - Control Systems – Hagan, Sheng, Yen
 - Telecommunications – Cheng, Scheets, Rahnavard, Teague
 - Computational Electromagnetics – Bunting, West
 - Networks, Signals, and Image Processing – Chandler, Cheng, Fan, Piao, Scheets, Teague
 - MEMS and Materials – Abdolvand, Vashae
- Department Head
 - Keith A. Teague, ES202
 - Management of ECE, budgeting, teaching assignments, communication with the Dean and other departments



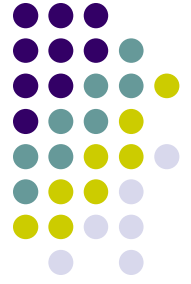
ECE Statistics

- Student Body (approximate)
 - BS 300
 - MS 115
 - PhD 55
- Faculty
 - 25 full-time, tenured or tenure track, in Stillwater and Tulsa
 - 9 new faculty (4 new positions) in the past four years
 - 1 open position
- Research
 - Approximately \$3,500,000 in research expenditures annually in 2006

PhD Requirements to Remember



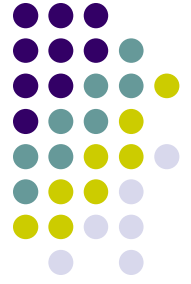
- Graduate Memorandum
 - Describes all key requirements for a graduate degree from ECE
 - Download from ece.okstate.edu
- Advisor and Committee
 - Your advisor is your boss
 - Communicating closely with your advisor is critical to your success
- ECEN 6001 – Graduate Seminar (first year)
- ECEN 6050 – PhD Preliminary Exam (first year)
- PhD Qualifying Exam
 - At least six months prior to graduation (this is changing)
- Dissertation Defense
 - Must meet University deadlines (available from the Graduate College)



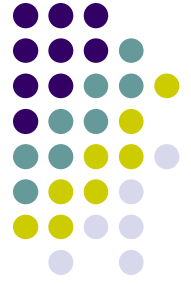
Opportunities and Obligations

- As a Doctoral Student, you have opportunities and obligations that you should be aware of
- Prepare for your future
 - Your RA/TA position is part of your professional career with responsibilities and obligations
 - Excel in the classroom
 - Develop excellent research skills
 - Pursue Scholarship at every opportunity
 - Participate in ECE and University activities
 - Be an active member of the University community
 - Provide guidance and mentoring to those behind and/or below you
 - Develop a plan for your future
 - What do you hope to accomplish in the first five years after your graduation?
- How do you want others to describe you?

Responsibilities to Your Advisor



- Advisors and students have a close relationship
- Your advisor provides your salary and guides your education
- You and your advisor contribute to each other's success and recognition
- Your work contributes to the reputation of your advisor, ECE and OSU and helps us build a stronger program



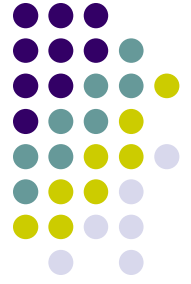
Your Future

- Important things to consider
 - What do you want to do?
 - What are your priorities?
 - What can you do now to be successful?
 - Know your resources
 - Be self motivated
 - Don't procrastinate
 - Read and think
 - Participate
 - Push your advisor
 - Work as many hours as it takes
 - Community and Collegiality
 - Classroom Experience
 - Research Experience
 - Publication (Scholarship)



Our Obligations

- The faculty and staff are here to help you be successful
- It is our goal that everyone succeeds in his or her program
- The strengths of a graduate program are in its faculty and students
- But, you must take an active role in this process
 - Don't depend on others to do your job
 - Spend the necessary time to make strong progress
 - Communicate with (and support) your advisor and ECE
 - Don't expect to be reminded of all your responsibilities – be proactive in your life



Good Luck with Your Education

We're Very Happy You Chose OSU
and ECE